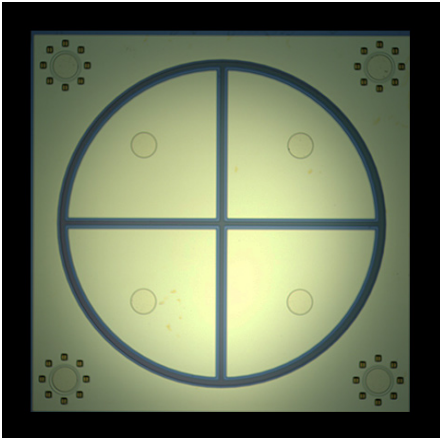


OG-QP-1000-60 BE-pin

Product Brief

Our Photodiodes, Your Circuits



Features:

- Low dark current
- Low capacitance
- High quantum efficiency

Applications:

- Position sensing
- Laser spot tracking
- Defense and Security

Overview:

Our PIN quad pixel arrays have low defect density, low capacitance, and low dark current that provides an ideal solution for reliable position sensing applications. These arrays come in 1 mm and 7 mm diameter versions.

Operating Characteristics: Temperature = 25°C

Parameter	Min	Typical	Max	Units
Wavelength Range	1000	-	1630	nm
Responsivity @ M = 1	0.85	0.95	-	A/W
Dark Current @ M=10	-	2		nA
Operating voltage, Vr @ M=10		0	11	volts
Breakdown Voltage (Id = 10 μ A)	15	20	65	volts
Capacitance @ M=10		50		pF
Capacitance @ M=10		10		μ m